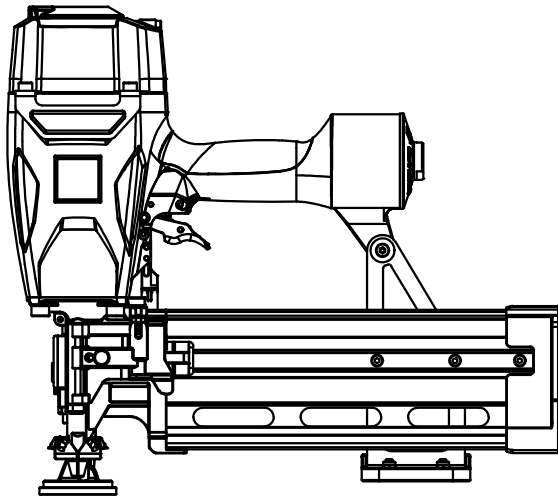


1) TOOL TYPE - GERAETETYP - DESCRIZIONE MACCHINA - TYPE D'OUTIL - TIPO DE MAQUINA

cod. 11547.03 F58AC ROOFLOC-75



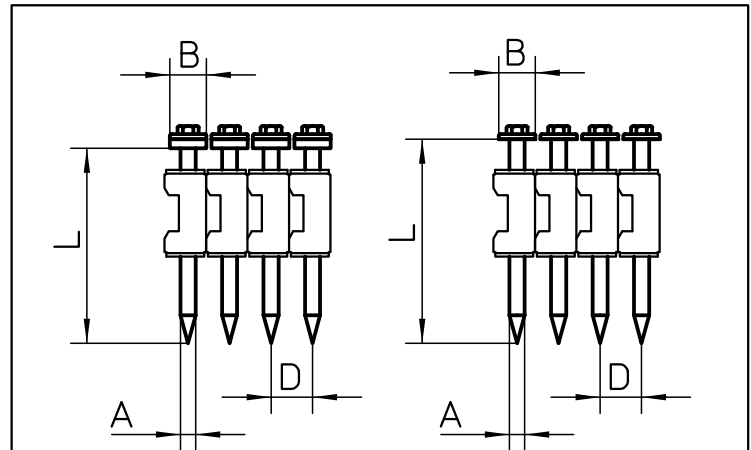
2) TOOL CHARACTERISTICS
 SPEZIFICATION DES GERAETES
 CARATTERISTICHE TECNICHE
 CARACTÉRISTIQUES DE L'OUTIL
 CARACTERÍSTICAS DE LA MAQUINA

HEIGHT HOEHE ALTEZZA HAUTEUR ALTURA	WIDTH BREITE LARGHEZZA LARGEUR ANCHURA	LENGTH LAENGE LUNGHEZZA LONGUEUR LONGITUD	WEIGHT GEWICHT PESO POIDS PESO
in. 14.76 mm. 375	in. 5.12 mm. 130	in. 16.34 mm. 415	lbs. 9.10 kg. 4.130
MIN-MAX WORKING PRESSURE MIN-MAX ARBEITSDRUCK MIN-MAX PRESSIONE DI ESERCIZIO MIN-MAX PRESSION DE TRAVAIL MIN-MAX PRESSION DE TRABAJO		100 / 120 PSIG 7 / 8 BAR	
AIR CONSUMPTION PER SHOT LUFTVERBRAUCH PRO NAGELUNG CONSUMO ARIA PER COLPO CONSUMATION DE L'AIRE PAR COUP CONSUMO DE AIRE CADA DISPARO		PERFORMANCES AT 90 psi (0.62 MPa) PRESTAZIONI A 6.2 bar (0.62 MPa) 1.86 l.	
RECOMMENDED LUBRICANT EMPFOHLENES SCHMIERMITTEL LUBRIFICANTE RACCOMANDATO LUBRIFIANT RECOMMANDÉ LUBRIFICANTE RECOMENDADO	GREASE MULTI-PURPOSE SYNTHETIC GREASE WITH SYNCOLON® (PTFE) OIL MINERAL OIL WITHOUT DETERGENT	SUPER-LUBE®	

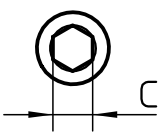
- * ACTUATION SYSTEM
- * AUSLÖSEART
- * ATTUAZIONE
- * MISE EN ŒUVRE
- * ACTUACIÓN

3) FULL SEQUENTIAL ACTUATION

* SEE INSTRUCTION MANUAL - SIEHE BETRIEBSANLEITUNG - VEDI MANUALE - VOIR MODE D'EMPLOI - VER EL MANUAL



3) FASTENER DATA
 ANGABEN ZU DEN BEFESTIGUNGSMITTELN
 CARATTERISTICHE TECNICHE FISSAGGI
 DONNÉES DES PROJECTILES
 DATOS DE CLAVOS

A) WIRE SCHAFT FILO ALAMBRE TIGE	in. 0.161 mm. 4.10	
B) HEAD KOPF TESTA TÊTE CABEZA		C) WRENCH in. 1/4" mm. 6.30
D) PITCH TEILUNG PASSO PAS PASO	in. 0.453 mm. 11.50	
L) LENGTH LAENGE LUNGHEZZA LONGUEUR LONGITUD	in. 1 1/2" - 3" mm. 38 - 76	
MAGAZINE CAPACITY MAGAZIN CAPAZITÄT CAPACITÀ CARICATORE CAPACITÉ CHARGEUR CAPACIDAD CARGADOR	30 nails	

- * LOADING
- * LADEN
- * CARICAMENTO
- * CHARGER
- * CARGA

- BOTTOM LOADING
- SIDE LOADING
- TOP LOADING
- COIL
- REAR LOADING

NOISE CHARACTERISTICS
 GERÄUSCH - EMISSION DATEN
 CARATTERISTICHE RUMOROSITÀ
 CARACTÉRISTIQUES ACOUSTIQUE
 CARACTERÍSTICAS DE RUIDO

UNI EN 12549:2009 $L_{WA,1s}$: 105.8 dB(A) - $K_{WA,1s}$, 2.5
 UNI EN ISO 11201 $L_{pA,1s}$, : 101.8 dB(A) - $K_{pA,1s}$, 2.5

VIBRATION VALUE
 VIBRATIONSWERT
 VALORE DI VIBRAZIONE
 VALEUR DE VIBRATION
 VALOR DE VIBRACIÓN

UNI CEN ISO/TS
 8662-11:2006

m/s² 3.4